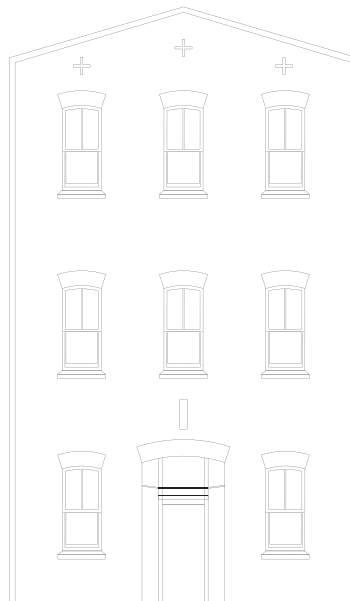




Angus Steak House has been serving the biggest and best steaks in town to our valued customers for over 50 years.

“After a good dinner one can forgive anybody, even one’s own relatives.”

- OSCAR WILDE



Drinks

Craft Beer

Deep Creek Under Current (Pilsner)	14
Deep Creek Redwood (APA)	14
Deep Creek Brewtiful Haze (NE IPA)	17

Beer

Corona	13
Steinlager	11
Steinlager Pure	12
Steinlager Tokyo Dry	12
Speights Summit Ultra	11
Mac's Black	13
Heineken	13
Heineken Light 2.5%	11

Cider

Isaac's Apple Cider	10
Fortune Favours Blueberry Cider	12

Wine

Sparkling

	Glass	Bottle
<i>Mionetto Prosecco Brut</i>	13	57
Golden apples, honey and white peach give a lively light, clean, dry finish.		
<i>Akarua Brut</i>	15	77
The perfect aperitif, light, zesty and crisp. Aromas of stonefruit and florals lace the nose with a vibrant finish.		

Champagne

<i>Piper-Heidsieck</i>	-	127
Bright, crisp and lively. Subtle hints of citrus fruits and blossoms compliment the palate.		

Rosé

	Glass	Bottle
<i>AIX</i>	-	60
Classic French rosé blends watermelon, strawberries and flowers. A perfect wine for all hours of the day.		
<i>Neudorf</i>	15	66
Dry, elegant and textural. A rosé showing zest citrus, cranberries and pink grapefruit.		



House Wine

	Glass
Red	10
White	10
Port	11

White Wine

Sauvignon Blanc

Glass Bottle

Dashwood

11 55

Bright, direct and crisp. Accents of citrus and tropical fruit flavours refresh the palate.

Loveblock

- 65

Bursts of tropical stone fruits entertain the palate, with hints of elderflower, honeysuckle and fresh herbs.

Pinot Gris

The Ned

12 58

The rich blend of fresh peach and nectarine compliment this classic Pinot Gris.

Zephyr

- 68

An elegant Pinot Gris. The aromas of spice and pear give way to apple crumble and cinnamon flavours.

Chardonnay

Main Divide

13 55

A tasteful Chardonnay. Scents of lemon, melon and peaches harmonise with savoury notes of buttered corn.

Jackson Estate - Shelter Belt

- 65

The nose follows accents of citrus and fig, mixed with a textural intricacy and a long finish.

Red Wine

Pinot Noir

Glass Bottle

Martinborough Te Tera

14 72

A bold aromatic nose exaggerates flavours of plum and cherry.
A true expression of Pinot Noir.

Ata Rangi Crimson

- 87

This rich Pinot Noir has the intensity of its origin. A complex blend of blood orange and blackberry fill the palate.

Syrah

Te Mata

12 57

Enticing scents of dark rich fruit gives way for a black forest palate with a soft savoury finish.

Babich Black Label

14 64

Hints of dried herbs and coffee on the nose peel back layers of dark fruit, leading to a warm finish.

Other Reds

Pegasus Bay Merlot Cabernet Sauvignon

- 82

The deep ruby colours of this Merlot accentuates the plum flavours with a backbone of mouth filling ripe tannins from the Cabernet Sauvignon.

Te Mata Merlot Cabernet

13 64

Dark crimson with a bright purple hue.
Scent of plum and blackberry, the aromas deepen on the wine's palate into succulent, concentrated dark fruit with ripe soft tannins.

Spirits

*Smirnoff Vodka	10
42 Below Vodka	12
<hr/>	
*Gordon's Gin	10
Tanqueray Gin	12
Scapegrace Gin	14
<hr/>	
Jose Cuervo Tradicional	12
1800 Reposado	14
<hr/>	
Appleton Estate Signature Blend	13
Bacardi White	11
Stolen Smoked Rum	13
Stolen Gold Rum	12
Stolen Dark Rum	10
Stolen White Rum	11
<hr/>	
Jack Daniels Whiskey	12
Jim Beam	11
<hr/>	
J&B Rare Whisky	11
Johnny Walker Black Whisky	13
*Canadian Club Whisky	12
Bushmills 10Yr Whiskey	13
<hr/>	
De Valcourt Brandy	10
<hr/>	
Baileys	11
Pimms	11
Frangelico	11
Kahlua	11
Amaretto	12
Drambuie	11

* House Spirits

Non Alcoholic

Mineral Water

500_{ML} / 1L

Voyage Sparkling and Still Mineral Water	5	10
--	---	----

Juice

Orange / Apple / Cranberry	6
----------------------------	---

Soft Drinks

Coke / Coke Zero Sugar	6
------------------------	---

Sprite	6
--------	---

Ginger Beer	7
-------------	---

Lemon, Lime & Bitters	7
-----------------------	---

Ginger Ale	7
------------	---

Soda Water	6
------------	---

Tonic Water	6
-------------	---

